

# ALTUS NR2 QUICK START GUIDE v1.2.0

This Quick Start Guide contains information on how to set up and begin using your Altus NR2

## Items Included

The following items are shipped as standard:

1. Altus NR2
  2. 4 x Lithium Ion Batteries
  3. 1 x USB data cable
  4. 1 x AC Adapter LEMO 9-pin Power Cable
  5. 1 x Altus NR2 Battery Charger
  6. 1 x battery charger cable for wall socket
  7. 1 x battery charger cable for car cigarette lighter
- USB Stick containing Altus NR2 manuals (not shown)



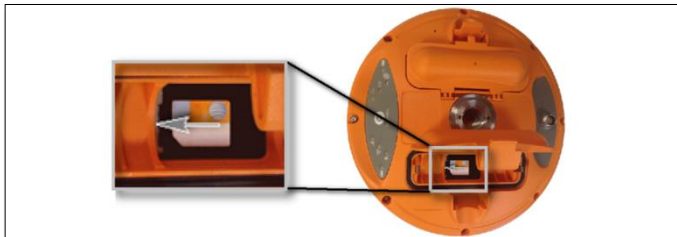
## Additional Equipment Required

- GSM/GPRS Cellular Modem micro SIM Card with data service
- Tablet, PC or Phone with a WiFi modem

## Getting Started

### 1. Install the SIM card and batteries

- Install an activated SIM in the left hand battery slot
- Insert fully charged batteries



- The positive side of the battery should point to the front panel of the Altus NR2

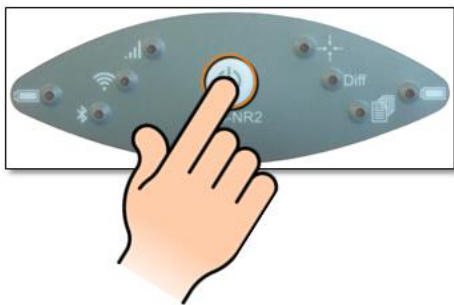


- Press firmly at the position indicated by the grey arrow
- The battery door is only latched after a click is heard



## 2. Power up the Altus NR2

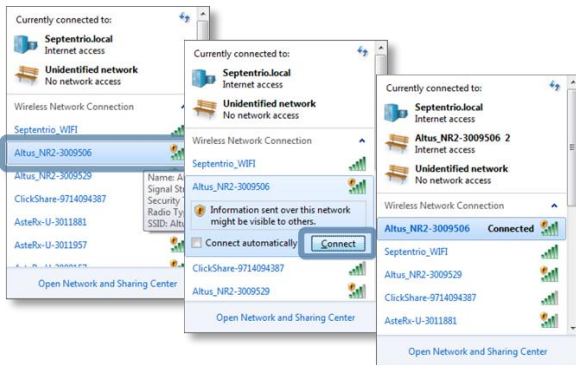
- Power up by pressing the power button once
- The unit will fully boot up in around 20 seconds



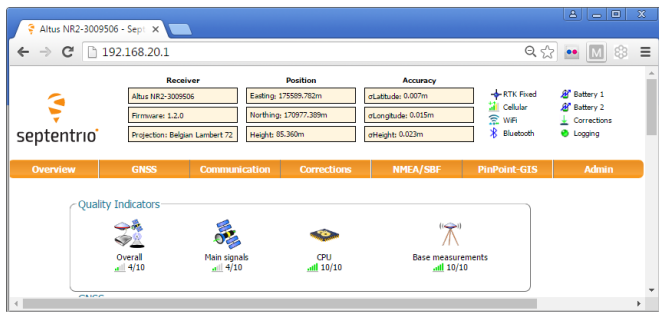
(To switch off the Altus NR2, press the power button for 2 seconds)

### 3. Connect to the Web Interface

- Search for a wireless network or access point called 'Altus\_NR2-XXXXXXX' and click **Connect**.
- No password is required



- Open Browser and type **192.168.20.1** in the address bar.



## 4. Saving settings during configuration

Save current configuration to boot configuration.

Save

- During configuration, the pop up above will appear if the settings are changed
- Click on Save to keep the same settings at the next start up

## 5. Configure the Cellular Modem

- On the **Communication/Cellular** Tab enter the appropriate information: leave blank if fields are not applicable
- Click **Ok** when complete

Communication > Cellular

Cellular

Connected HSPA Cellular Network 46.179.222.94

Cellular PIN  
PIN code \*\*\*\*\*

Cellular Configuration

Power  off  on

Internet

Connect  off  on

Access point name internet.proximus.be

User

Password

Standard  2G  3G

Cellular Data Call

Enable  off  on

Role  Calling  Accepting

Call number

Speed auto

Output GGA  off  on

Roaming

Enable roaming  off  on

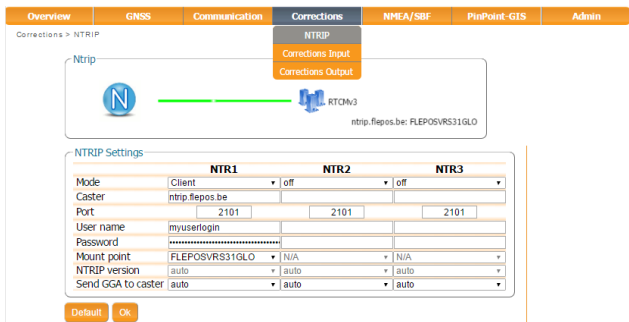
Status

Status	Connected
Internet type	HSPA
Signal strength	-69 dBm
Operator	Proximus
Roaming	No

Default Ok

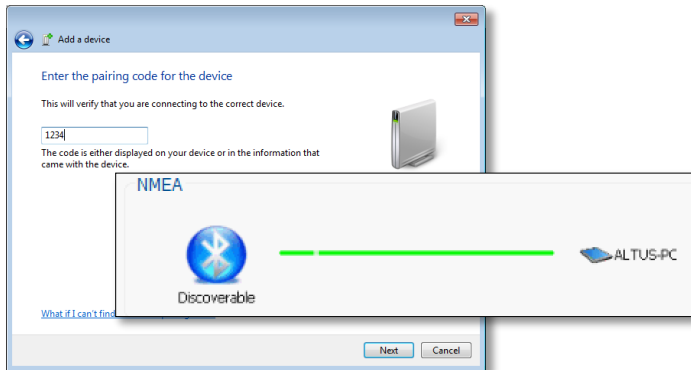
## 6. Configure NTRIP

- Click the **NTRIP** tab and enter in appropriate details
- Click **Ok** when complete



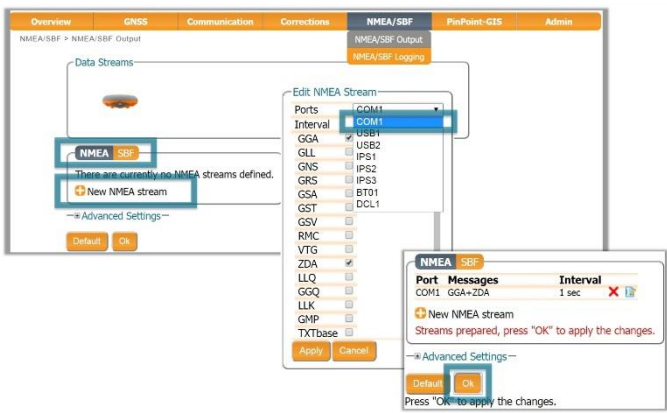
## 7. Connect Bluetooth to third-party software

- Set third-party software to search for Bluetooth devices
- Connect to Altus NR2 using '1234' as the pairing code



## 8. NMEA streaming through Bluetooth connection

- Click on the **NMEA/SBF** Tab
- Add a new NMEA stream
- Select the desired port (e.g. BT01 for Bluetooth)
- Select the Messages and the Interval and click **OK**



## 9. Use your favorite application

Once your receiver has been configured you can use a large variety of applications compatible with the Altus NR2 (SurvCE, Septentrio FieldGenius, Collector for ArcGIS, DigiTerra Explorer and more). Alternatively, you can also use PinPoint-GIS which provides seamless integration of GNSS data into Esri ArcGIS Online and other GIS database workflows.

## Further information ...

Contact your dealer for first line support. More information can be found on our website or by contacting Septentrio's Technical Support Department:

Web: [www.septentrio.com](http://www.septentrio.com)  
Email: [support@septentrio.com](mailto:support@septentrio.com)

### Europe

Septentrio Satellite Navigation  
Greenhill Campus  
Interleuvenlaan 15i  
BE3001 Leuven  
**Belgium**

Phone: +32 16 300 800  
Fax: +32 16 221 640

### North and South America

Septentrio Inc.  
Suite 200,  
23848 Hawthorne Blvd.  
Torrance, CA 90505  
**USA**

Phone: +1 310 541 8139  
Fax: +1 310 541 8257

### Asia-Pacific

Septentrio  
Level 901, The Lee Gardens  
33 Hysan Avenue,  
Causeway Bay  
**Hong Kong**

Phone: +852 3959 8680